

Map a drive Windows 11

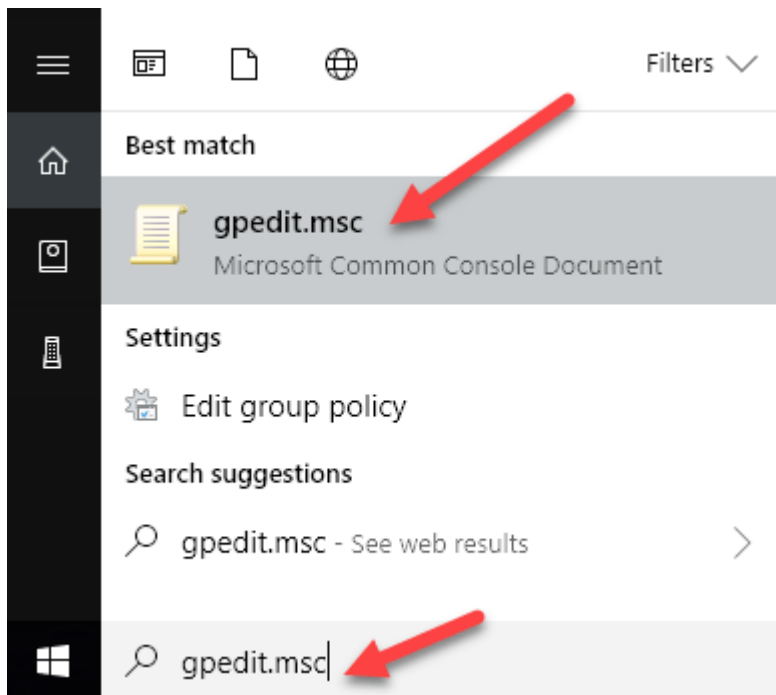
If you get an issue with internet options showing lock key follow below

**Note : If you are using users account run CMD as administrator and type Gpedit.msc or services.msc**

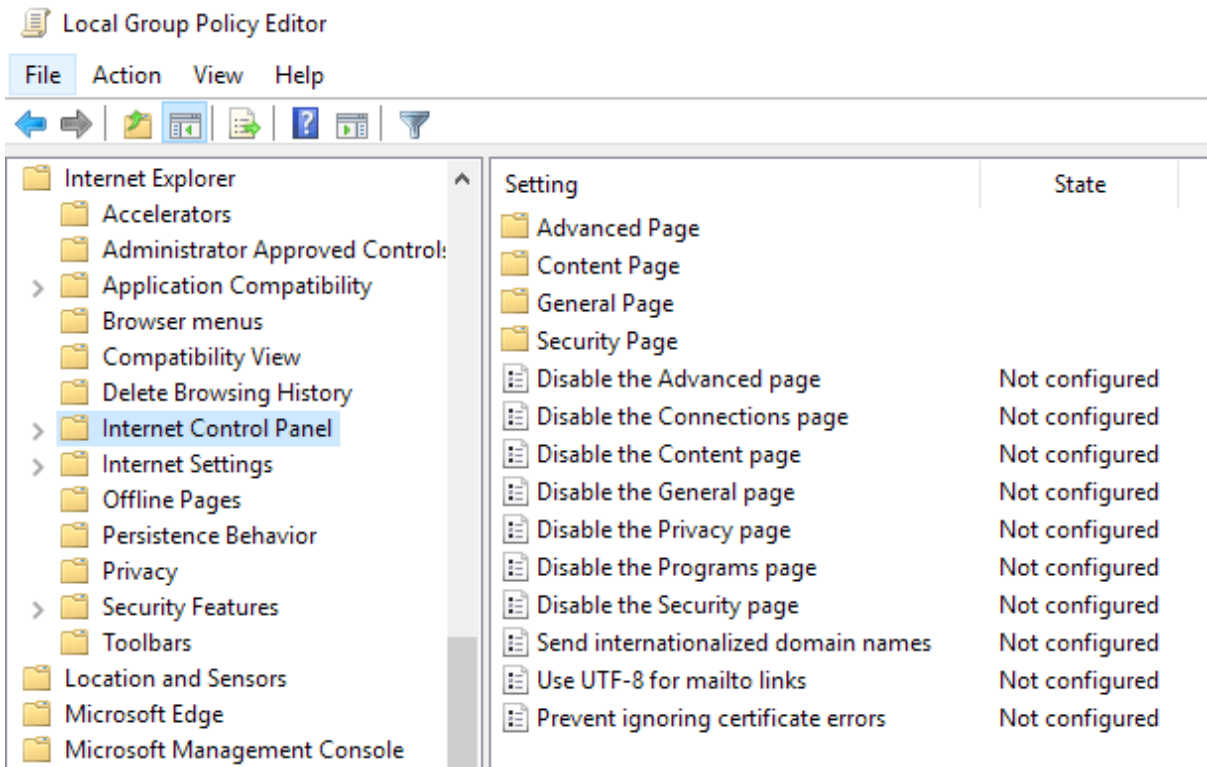
## Enable Internet Options in IE via Group Policy

To disable any tab in the Internet Options window, follow these steps below:

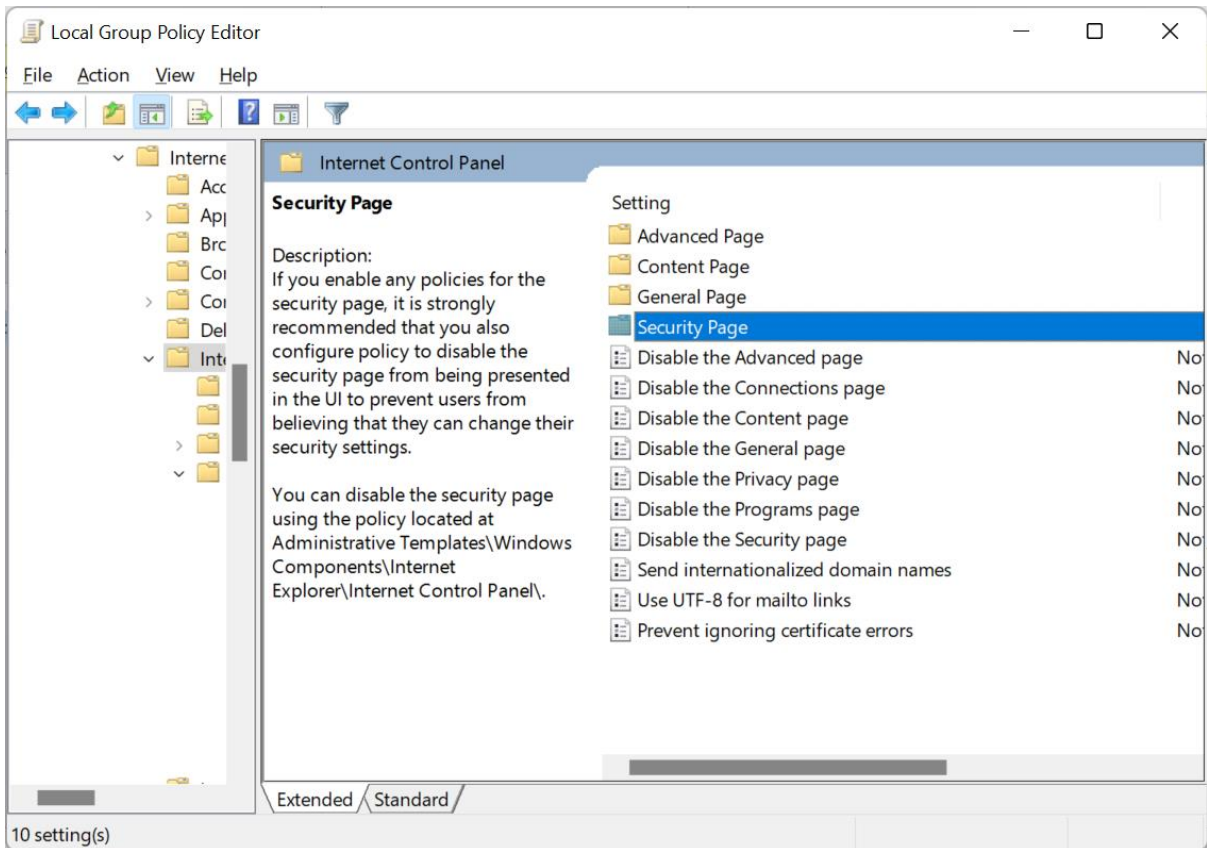
**Step 1:** Click Start and type **GPEDIT.MSC** in the search bar and hit enter to launch the Group Policy editor window.

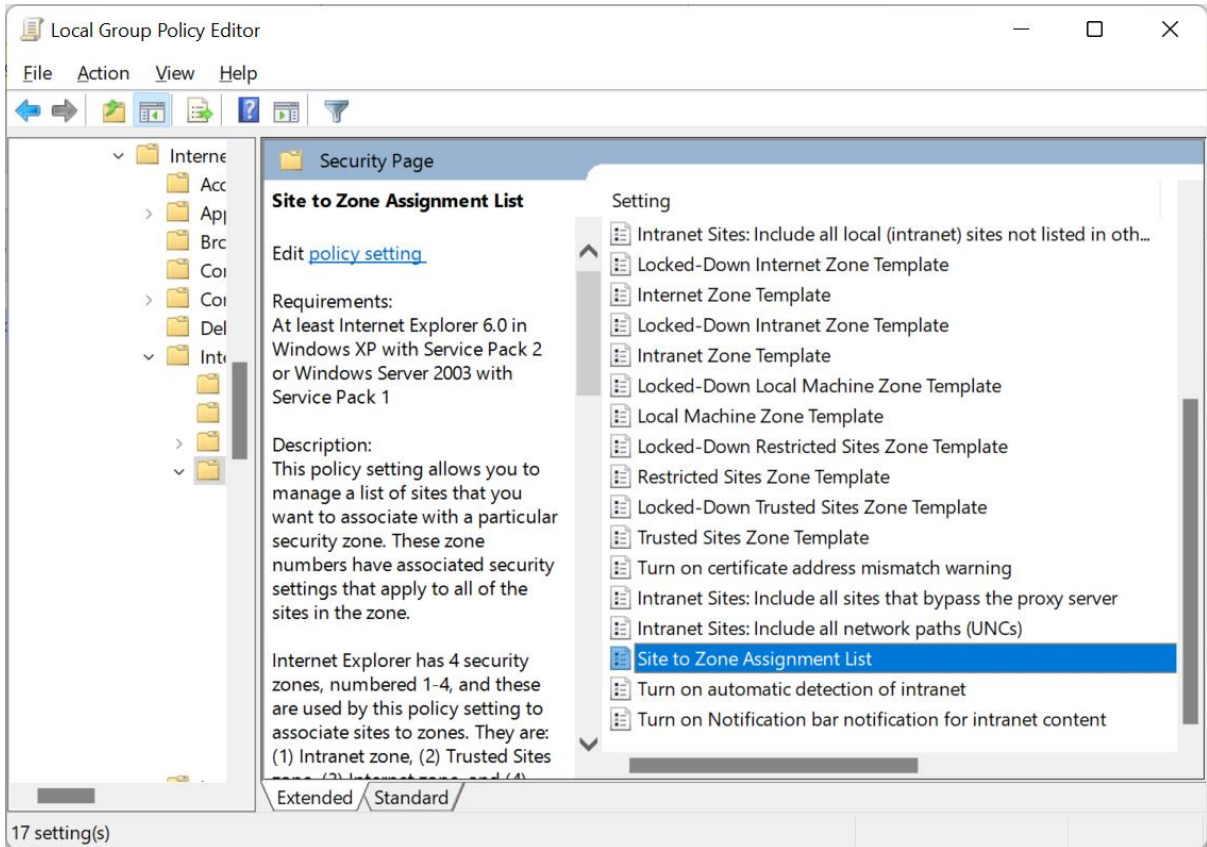


**Step 2:** In the Local Group Policy editor window expand **User Configuration > Administrative Templates > Windows Components > Internet Explorer** then click on **Internet Control Panel**.

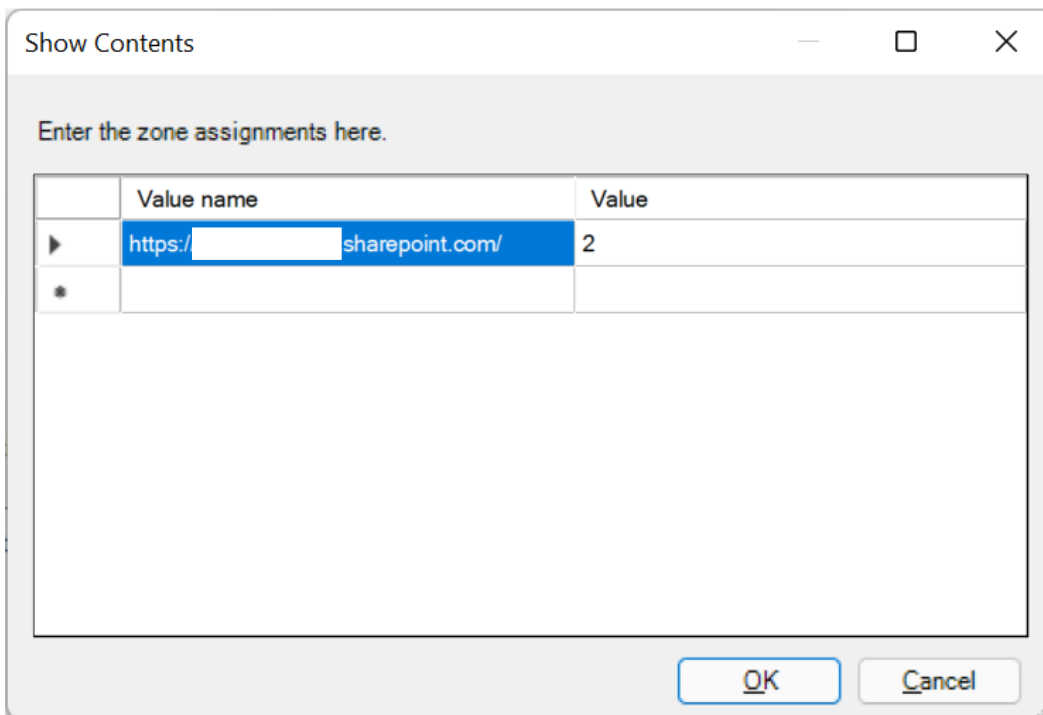


Go to security page

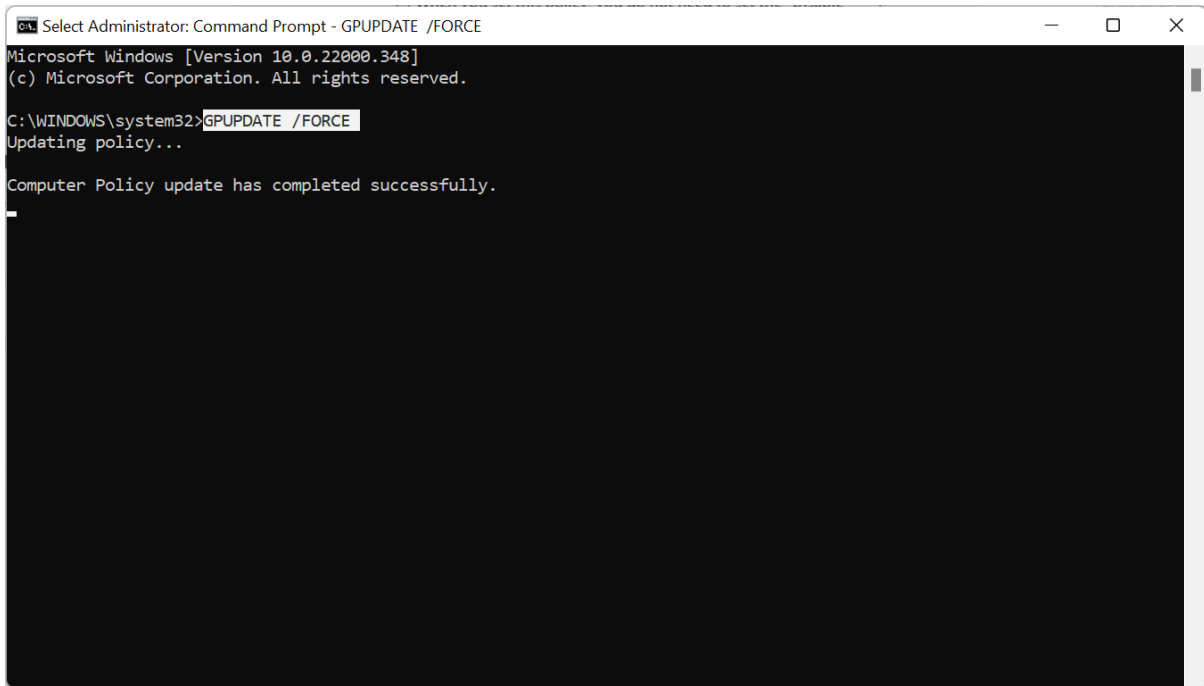




Highlight Enable, then click show. Value must be 2 for Trusted site e.g. <https://mydomain.sharepoint.com>

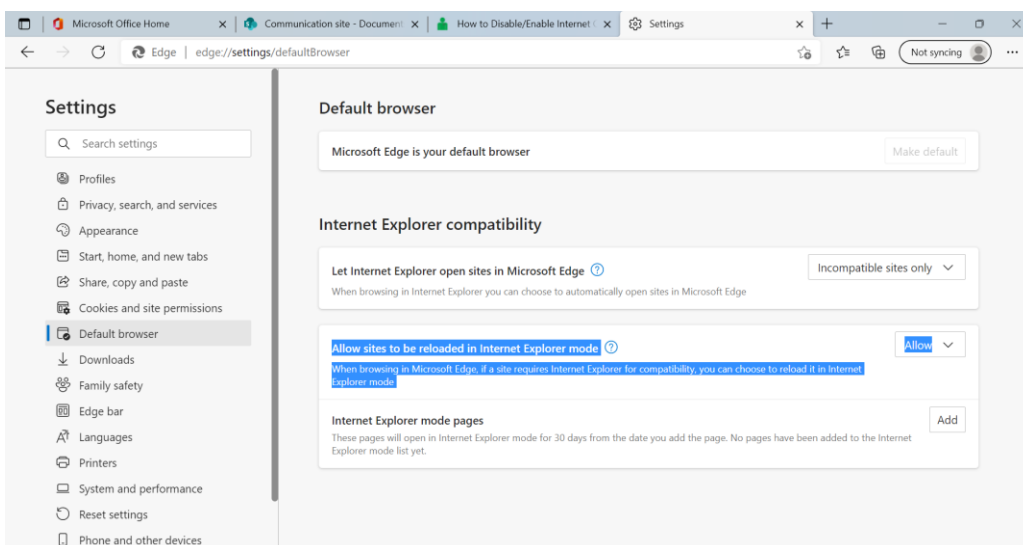


Type CMD and run as administrator “ GPUUPDATE /FORCE



Open Edge

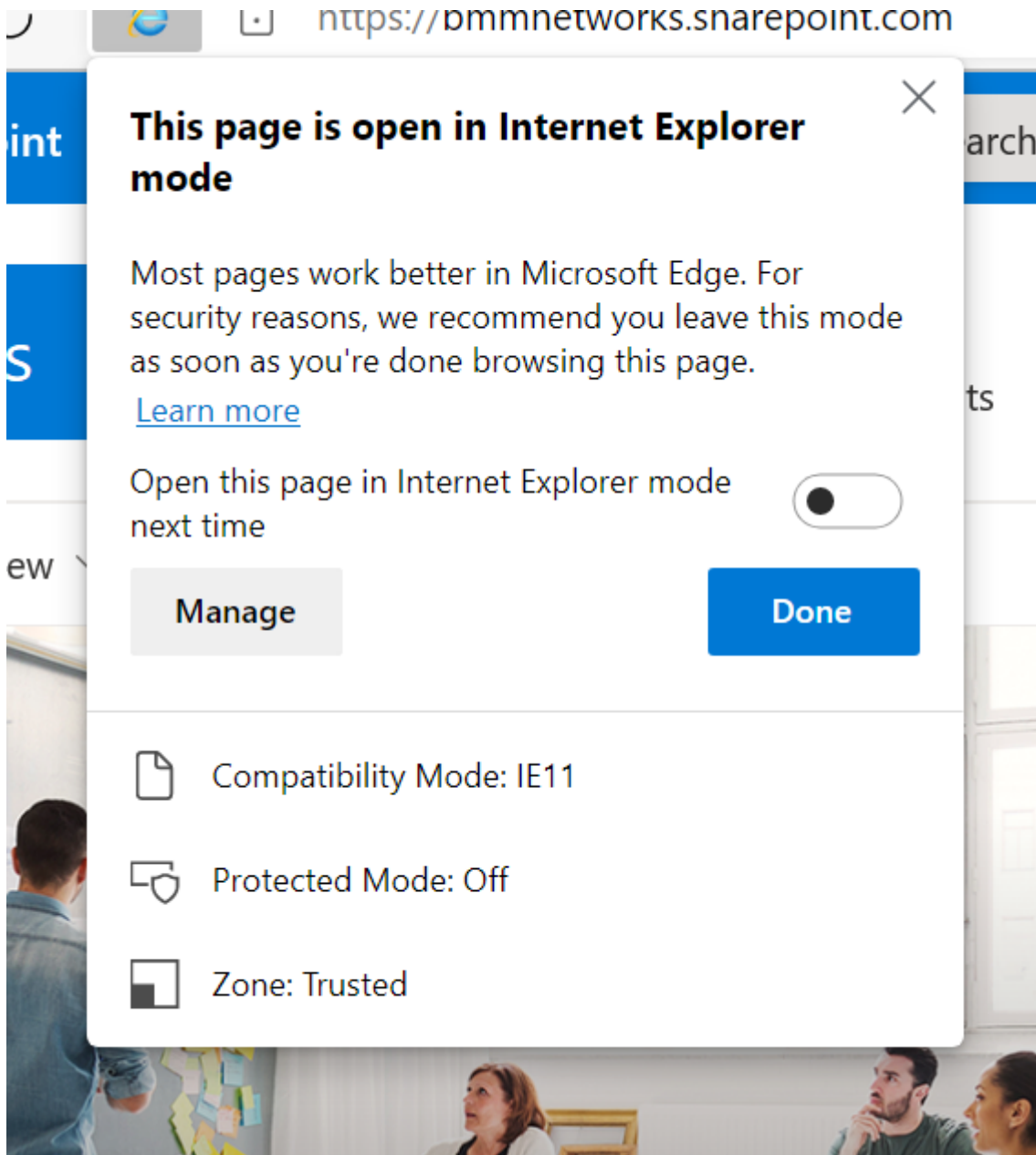
Click 3 Dots top right ... , Settings , Default Browser, change settings to allow



Restart edge

Open SharePoint site , example <https://sharepoint.com/> and then click 3 dots and select reload in internet explorer

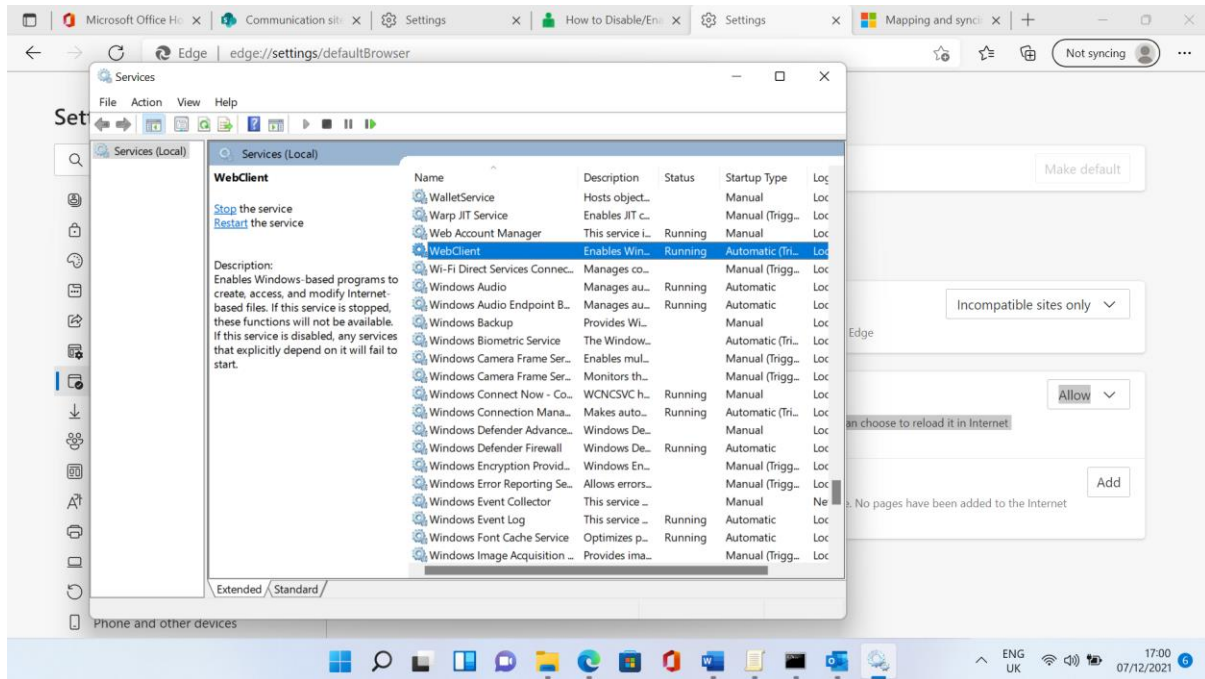
Click done



Finally To sort drive disconnection

Run services.msc

Select WebClient and make sure its running



Change setting from manually triggered to automatic

# WebClient Properties (Local Computer)



General Log On Recovery Dependencies

Service name: **WebClient**

Display name: WebClient

Description: Enables Windows-based programs to create, access, and modify Internet-based files. If this service is stopped, these functions will not be available. If this

Path to executable:  
C:\WINDOWS\system32\svchost.exe -k LocalService -p

Startup type: Automatic

Service status: Running

You can specify the start parameters that apply when you start the service from here.

Start parameters: