

Reducing uncompensated care and driving appropriate utilization with clinical AI

Accelerating financial recovery across hospitals and health systems



The makeup of financial and health risks across patient populations has and will continue to change because of the pandemic. Strain on the economy has left millions of individuals without means to pay for needed care, while others have chosen to defer seeking care altogether— putting them at greater risk for disease progression and inappropriate utilization. As a result, hospitals are experiencing significant margin reductions, loss of revenue and imbalance across care settings.

Traditional revenue cycle approaches to the current financial meltdown will not work. Beyond the question of reimbursement, is the question of appropriate utilization. Provider patient populations – whether fee for service, Medicaid, uninsured or commercially covered – require a different strategy when it comes to getting them into the right care setting at the right time and ensuring coverage for services rendered. To that end, Jvion's Financial Recovery Suite uses its prescriptive artificial intelligence to surface and address the clinical and financial risk factors that influence:



Uncompensated/Uninsured Care



Deferred Care



Avoidable Utilization



Early Disease State Detection

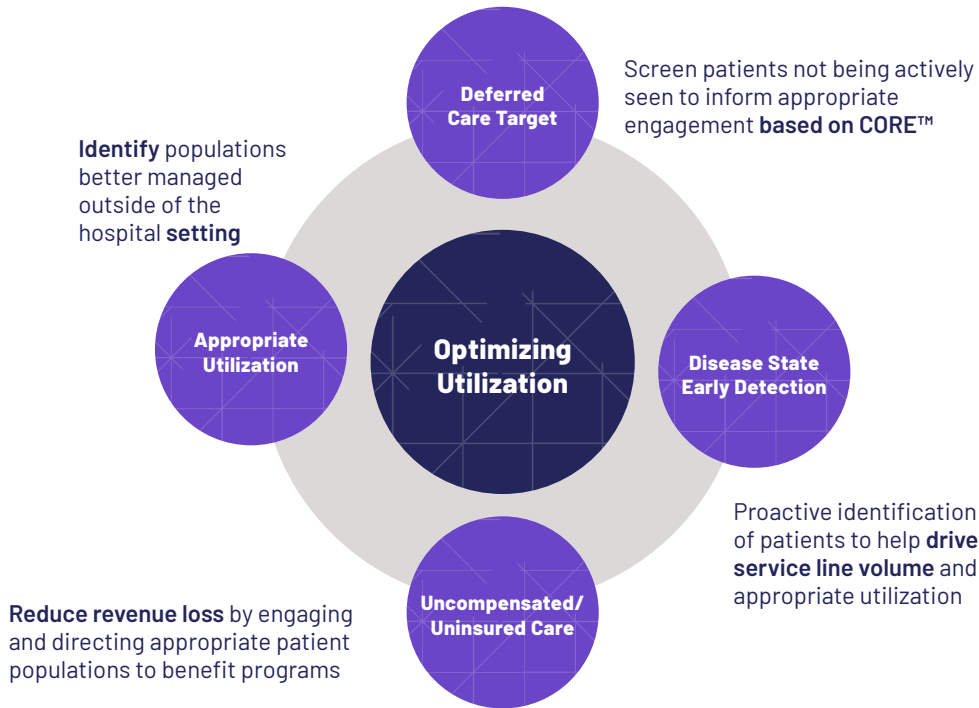
Applying a Clinical Lens to Financial Risk

For more than a decade, Jvion has applied its clinical AI to help providers identify patients on a clinical risk trajectory that can be modified. Our expertise includes predicting utilization, readmissions, disease progression and more.

That same expertise can also be used to inform outreach, engagement and care management work streams by predicting patients:

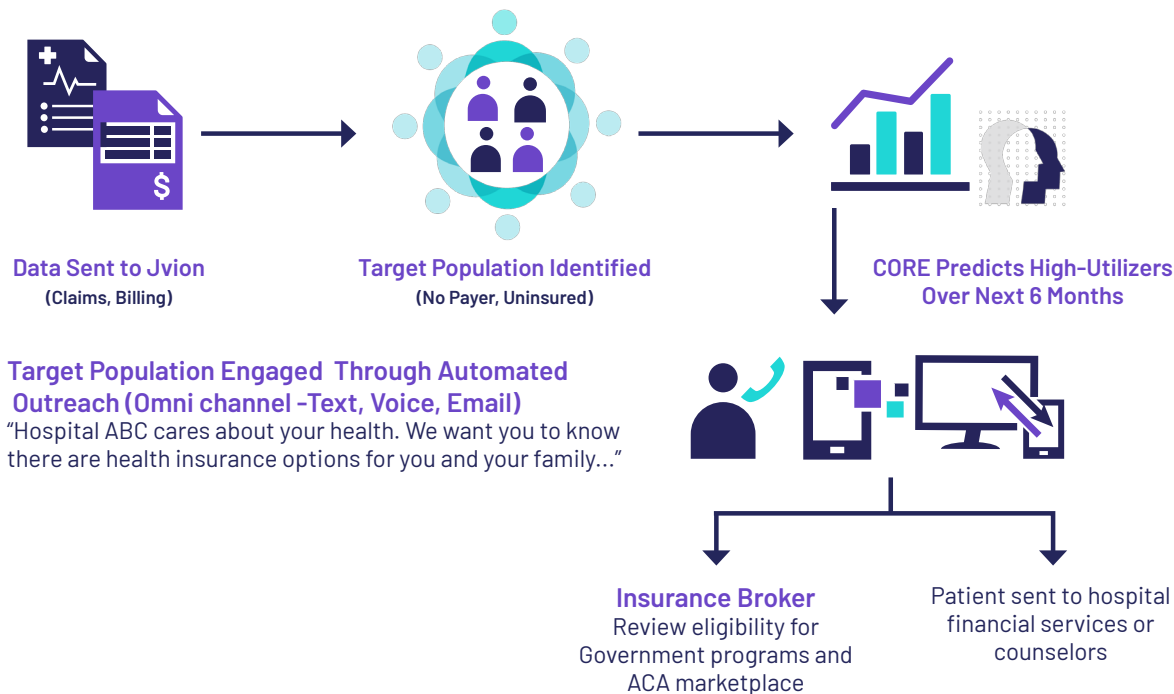
- Who are likely experiencing rapid health deterioration and should seek inpatient/acute care
- Whose care needs can be directed to an outpatient or ambulatory setting
- In an early detection stage for: Acute MI, Pre-Diabetes, CHF, COPD, Major Depression, Substance or Opioid Abuse and Suicide
- Within your population who may have lost financial means to cover their care but likely qualify for health benefit coverage

Accelerating financial recovery by optimizing utilization with prescriptive AI insights

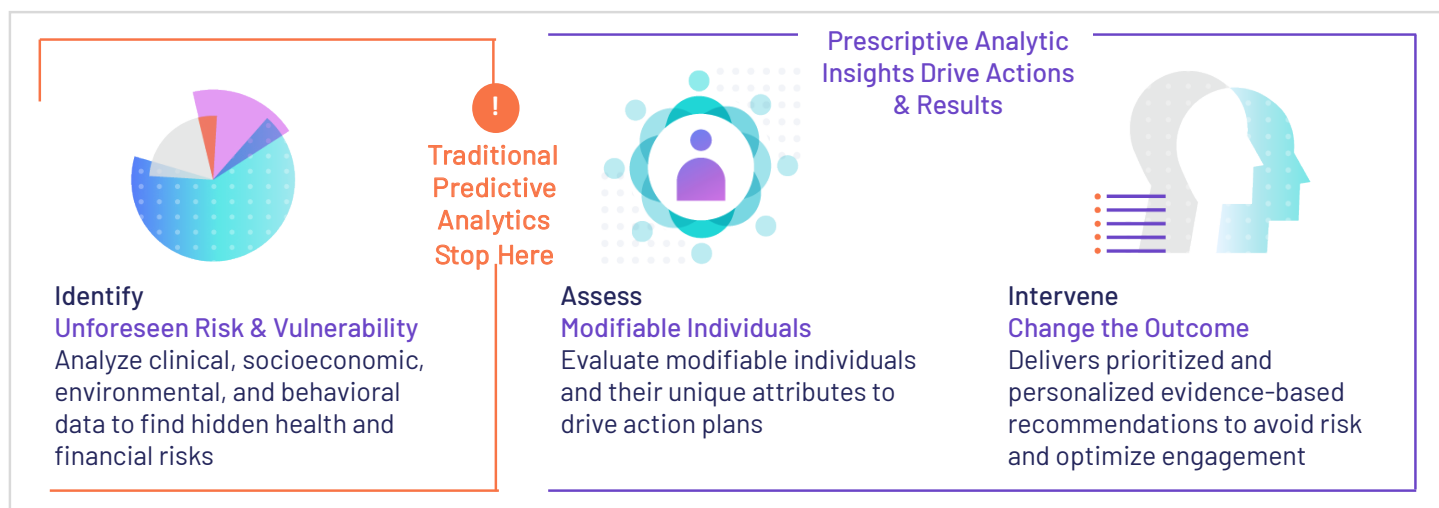


While other uncompensated care solutions focus on point of service, post discharge and optimal debt collection, only Jvion delivers insights while there is still time to act.

How Jvion helps identify and engage populations in need of medicare care coverage:



Traditional Predictive Analytics vs. the Jvion CORE™



The differentiating factor for Jvion is its prescriptive clinical-AI foundation also known as the Jvion CORE. Traditional predictive analytics and machine learning approaches stop at the identification of risk. The CORE connects projected financial and health risks with the course of action that will stop it. The resulting insights lead to reduction in unnecessary utilization, better quality of care and outcomes, and improved patient engagement and financial performance for our customers.

Built on Microsoft Azure, the CORE is a secure and scalable prescriptive clinical-AI intelligence repository that aggregates structured and unstructured data, augments customer information with clinical, socioeconomic and experiential data from 30 million individuals and applies sophisticated algorithms to find correlations and inferences that matter.

The net effect of deploying this technology will be positive pressure on the accelerating trend of uncompensated care, as well as optimal patient outcomes.

To learn more call 470.427.2900 or visit jvion.com.

About Jvion

Jvion, a leader in prescriptive clinical artificial intelligence, enables providers, payers and other healthcare entities to identify and prevent avoidable patient harm, utilization and costs. An industry first, the Jvion CORE™ goes beyond predictive analytics and machine learning to identify patients on a trajectory to becoming high-risk. Jvion determines the interventions that will more effectively reduce risk and enable clinical and operational action. The CORE accelerates time to value by leveraging established patient-level intelligence to drive engagement across healthcare organizations, populations, and individuals. To date, the Jvion CORE has been deployed across hundreds of clients and resulted in millions saved.

